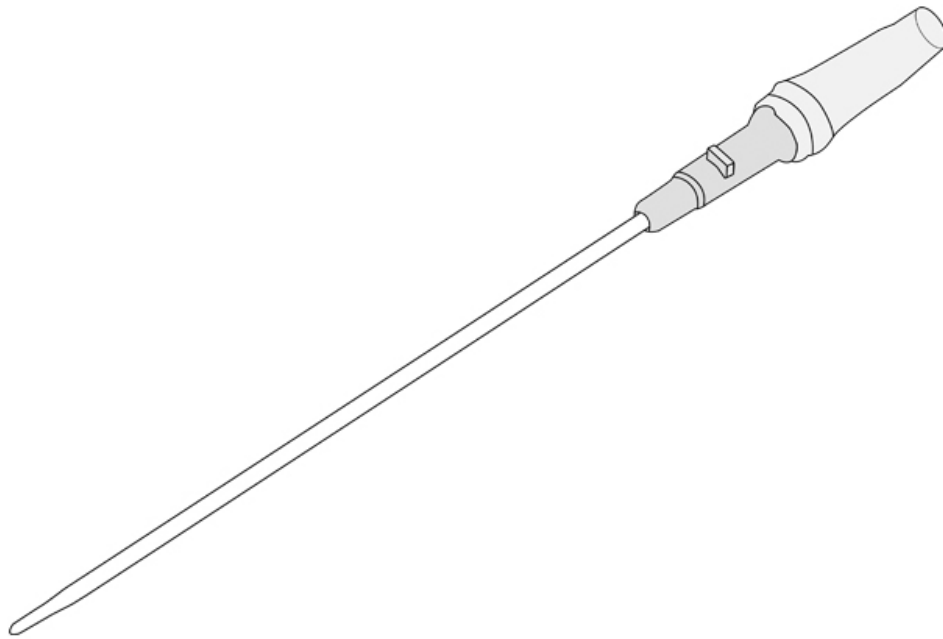
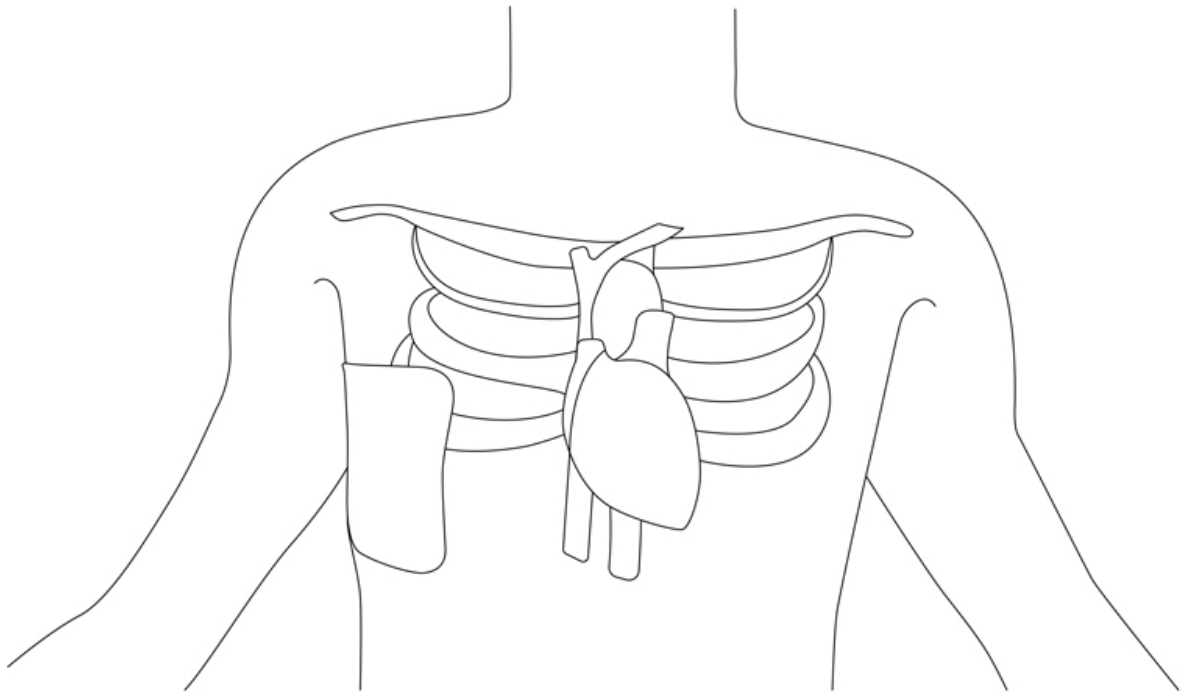
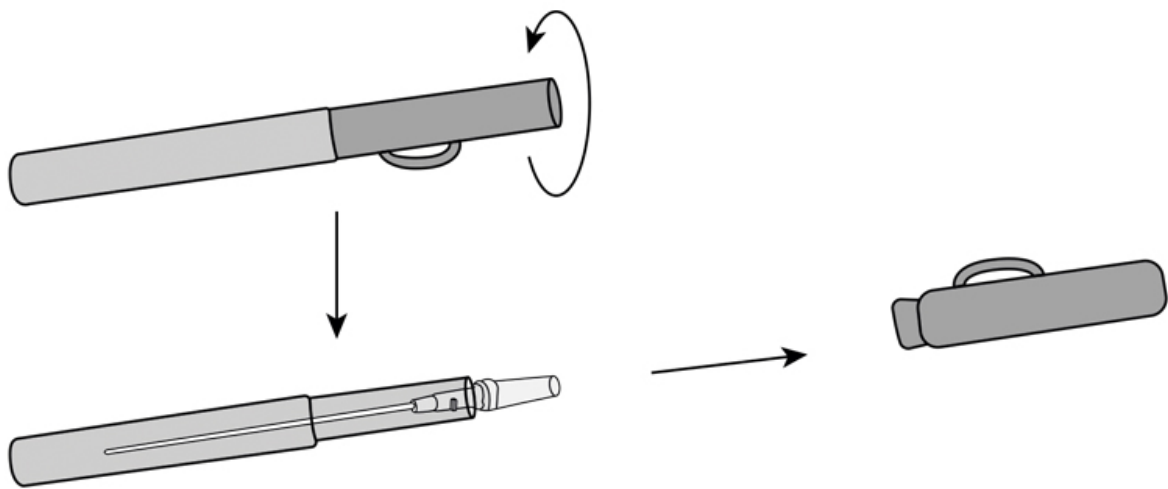
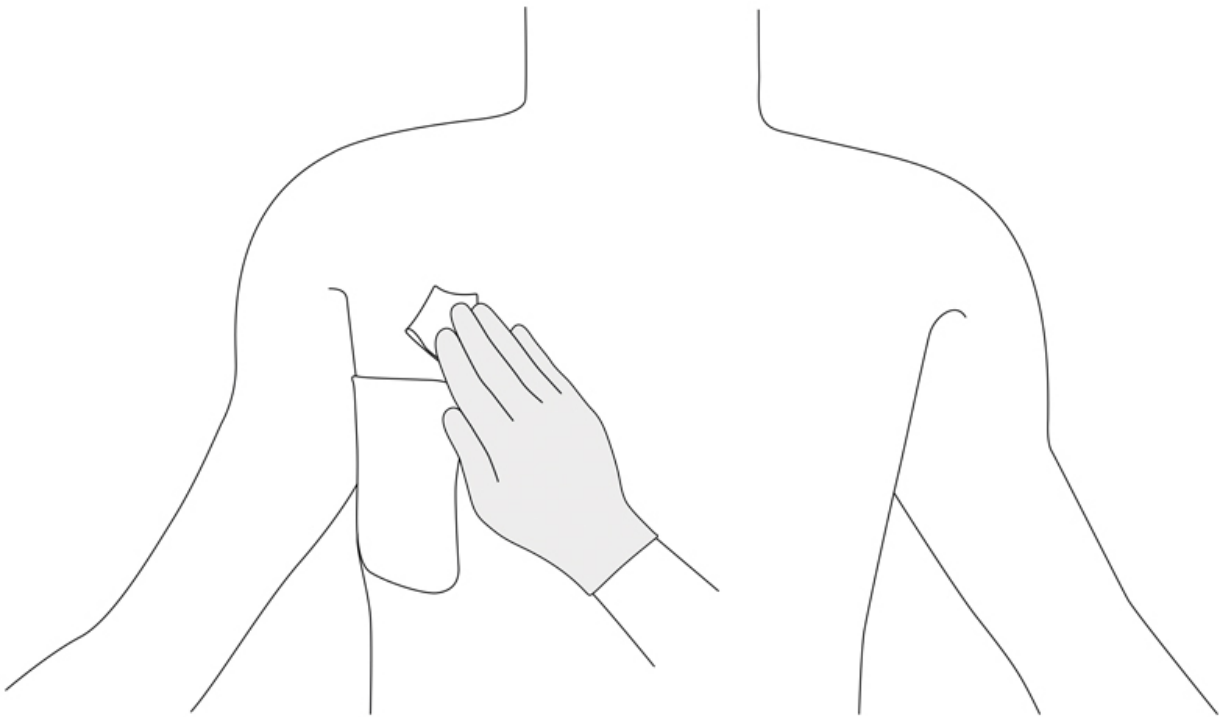


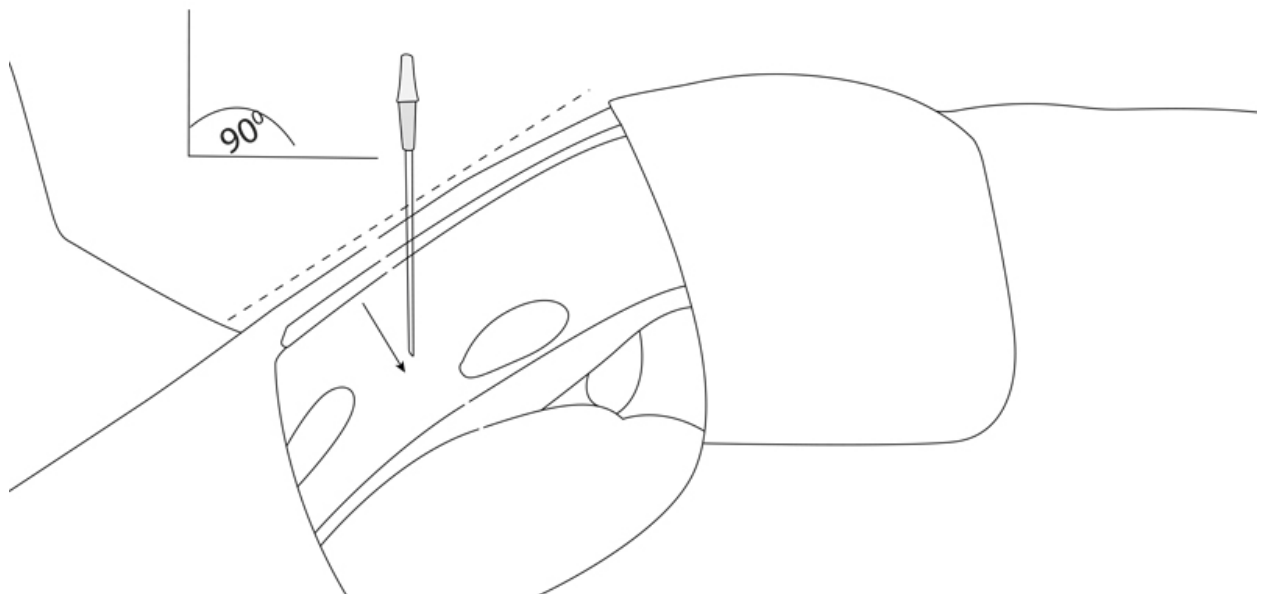
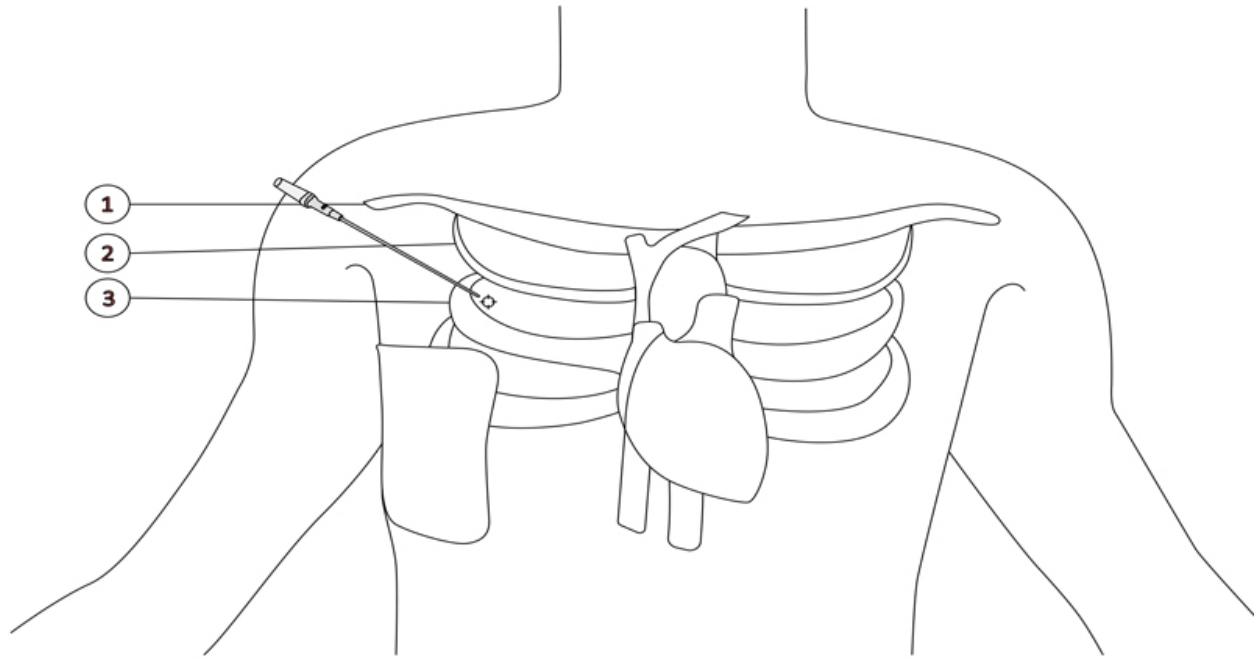
# Decompression Needle Users Manual

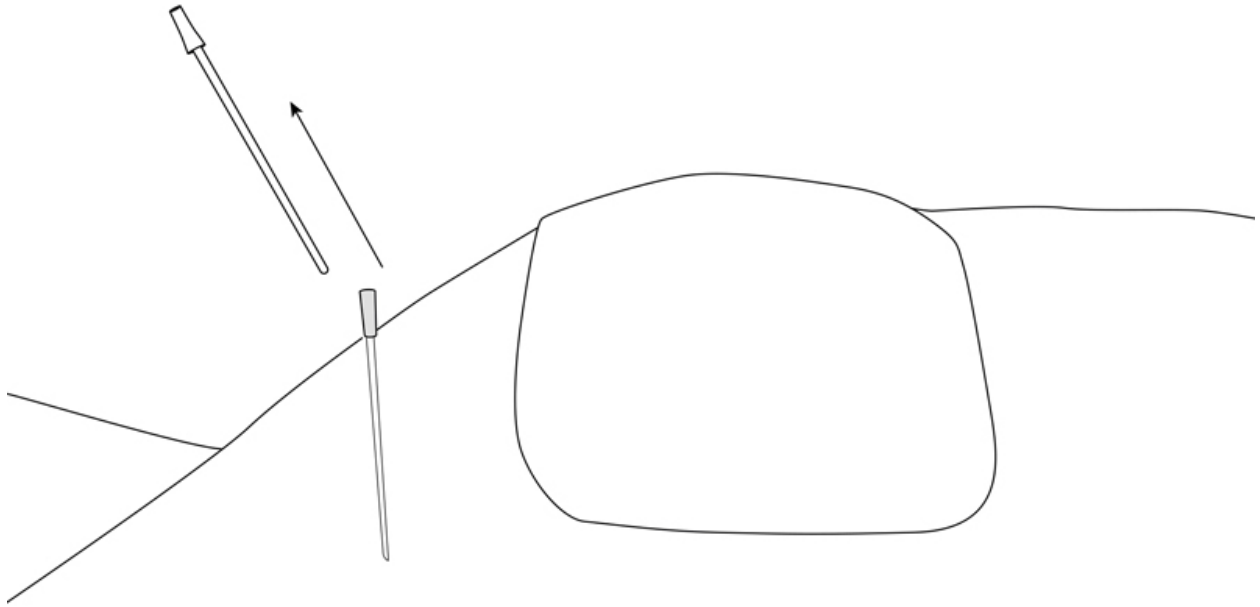


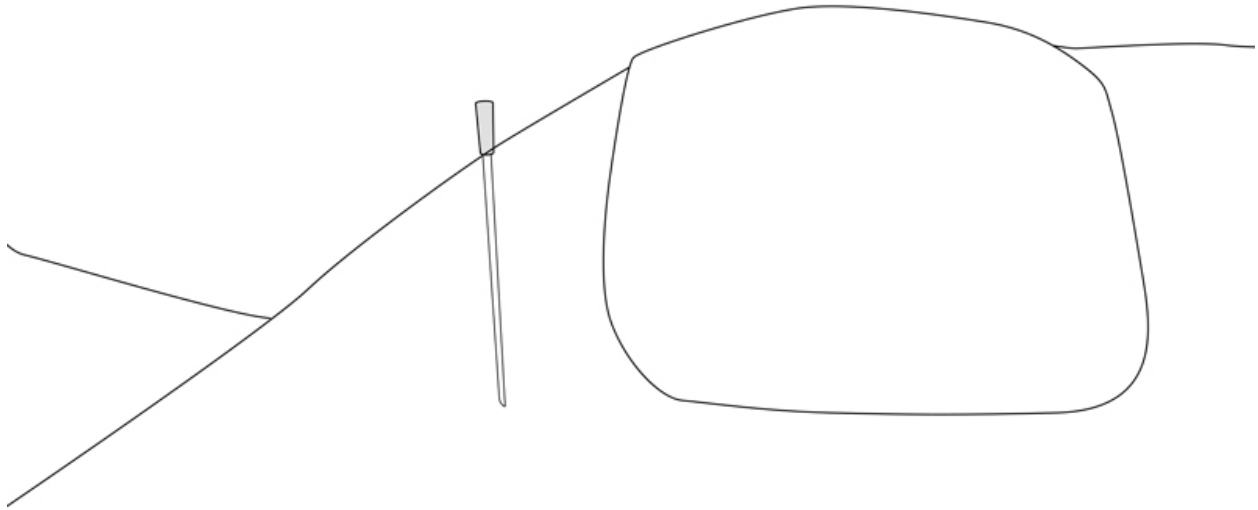
Need decompression must be performed according to established protocols to avoid adverse effects. Here is a detailed step for needle decompression.











## **Direction to use Decompression Needle**

Step 1: Mark the point of insertion of the needle: the second intercostal space at the midclavicular line. The midclavicular line is the point where the nipple is located.

Step 2: Disinfect the site with povidone or alcohol. This is to prevent infection at the point of insertion of the needle.

Step 3: Prepare the needle, according to its requirements. You should remove the flash chamber or luer-lock, if it has any.

Step 4: Insert the needle at the point of insertion marked earlier. This is to prevent it from piercing other structures like the heart and major blood vessels.

Step 5: Watch out for the audible release of air. Dispose of the needle carefully, and leave the catheter in place.

Step 6: Secure the catheter in place to release all the air in the pleural space.

Step 6: Observe the patient for improved conditions. If the patient's condition does not improve, insert another needle at a position adjacent to the initial one.